

General Notes & Guidance:

This drawing must be read in conjunction with the latest RIW Product Literature.

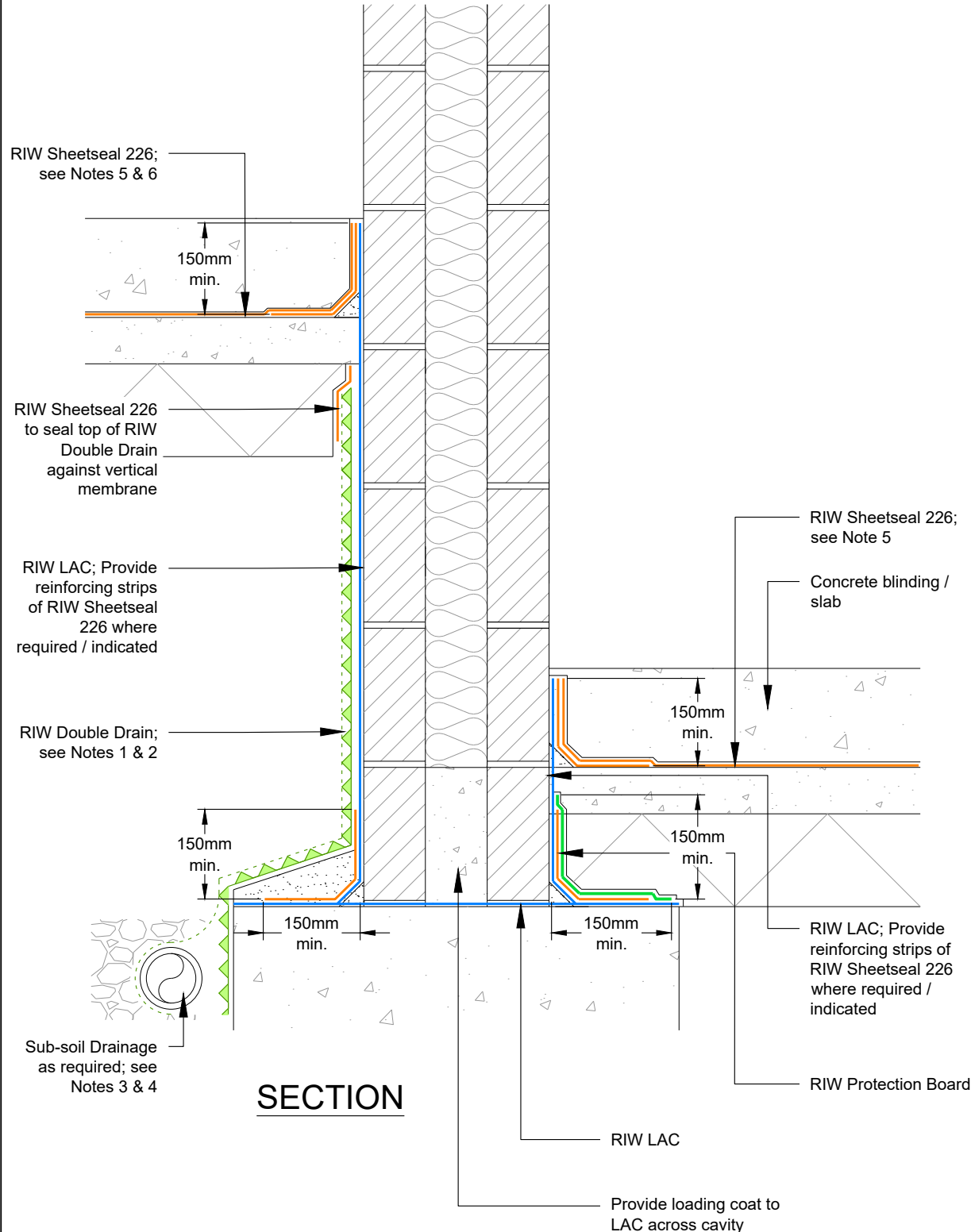
All waterproofing details shown herein must receive approval from the design team or appointed designer before implementation on site, these waterproofing details may have other impacts on the structure and these impacts must be assessed and understood by the design team or appointed designer.

BS8102:2009

6.2.4 The need for continuity in the waterproofing protection should also be considered when selecting a type of protection. In most circumstances, the protection should be continuous.

Drawing Notes:

1. Double Drain relieves hydrostatic pressure build up, and provides an additional factor of safety. However, if site conditions allow, Protection Board may be used instead.
2. Double Drain is to be installed with the filter fleece facing outwards towards the soil/ground.
3. A maintainable sub-soil drain must be provided at the base of the wall as required.
4. Sub-soil drainage should be capable of discharging water away from the structure.
5. RIW Sheetseal 226 should be covered and protected to reduce the risk of damage from following works.



LAC® is a registered trademark of RIW Ltd. Flexiseal Pro, FWM, Heviseal, Toughseal, DPM Red, DPM Blue, Sheetseal 226, Structureseal, Cavitydrain R20, Cavitydrain R7, Gas Seal Black, Gas Seal HC, Sheetseal GR, Structureseal GPT, Sheetseal 9000, Cementjoint, Cementfill FC, Cementfill HB, Cementflex and Cementseal are all trademarks of RIW Ltd. Krystol Internal Membrane™ (Kim®), Krystol Waterstop Treatment™, Kyrtonite™ Swelling Waterstop and Krystol Waterstop Grout™, trademarks are the property of Kyrton Inc.

This drawing is Copyright 2019 of RIW Ltd. Permission for copying is granted only to employees, authorised representatives, customers, and specifiers to support the sale or use of RIW Ltd products. All other rights are reserved.



RIW LTD
580 / 581 Ipswich Road, Slough, Berkshire, SL1 4EQ, UK
T: +44 (0) 1753 944200 E: technical@riw.co.uk W: www.riw.co.uk

Project:	Additional Info:		
Client:	Date: 19/09/19	Scale @ A4: NTS	Drawn: SJB
Title: CHANGE IN FLOOR LEVEL: EXTERNAL BARRIER PROTECTION For use in low risk sites	Project Ref:	Drawing No: RIW/TD/253	Checked: DK
			Rev: