

**General Notes & Guidance:**

This drawing must be read in conjunction with the latest RIW Product Literature.

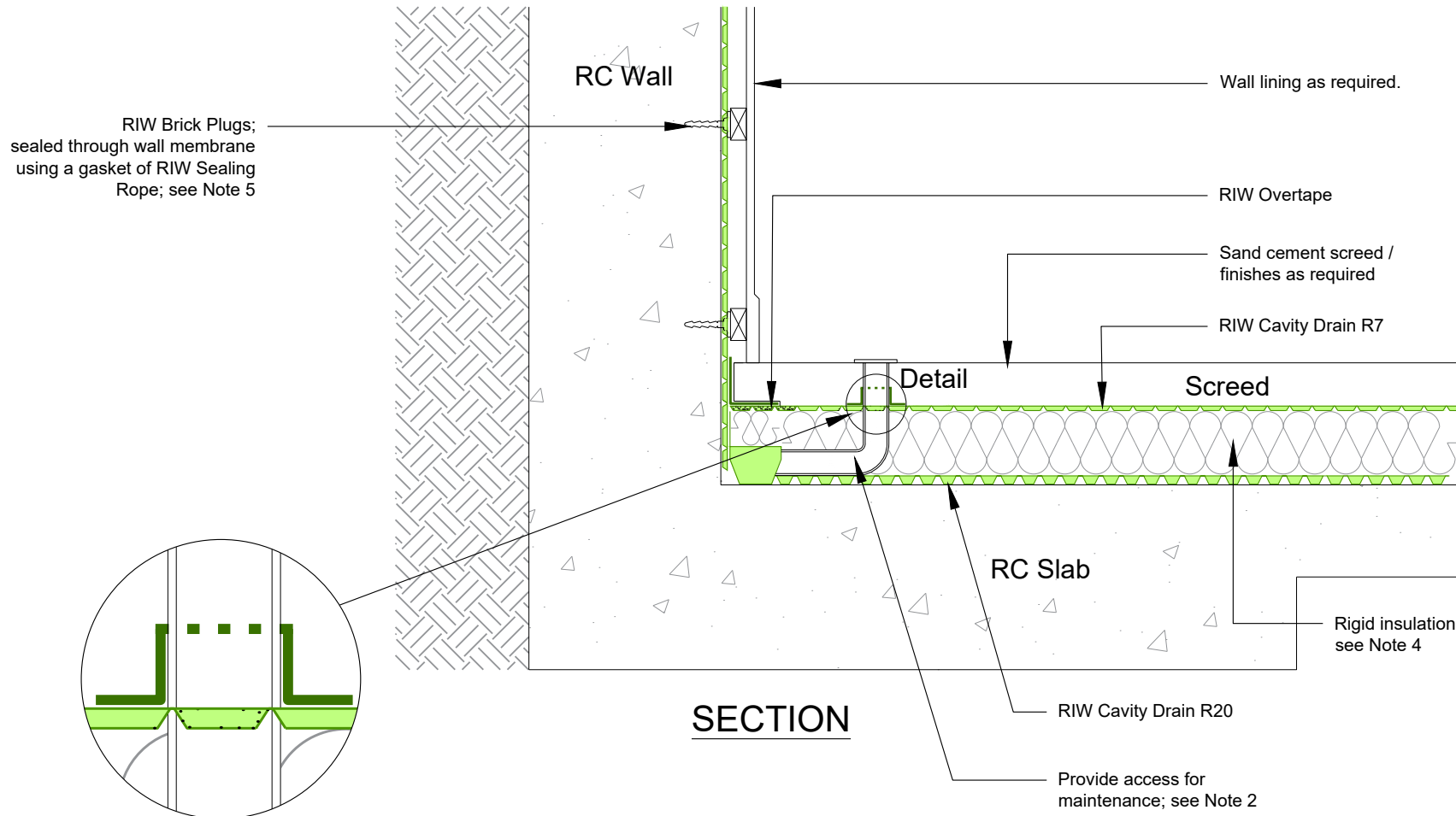
All waterproofing details shown herein must receive approval from the design team or appointed designer before implementation on site, these waterproofing details may have other impacts on the structure and these impacts must be assessed and understood by the design team or appointed designer.

BS8102:2009

6.2.4 The need for continuity in the waterproofing protection should also be considered when selecting a type of protection. In most circumstances, the protection should be continuous.

**Drawing Notes:**

- Concrete surfaces must be first treated with RIW Cementsseal Primer, to reduce the risk of leaching of free lime or mineral salts.
- RIW Aqua Channel acts as a maintainable drainage channel, and must be installed including :
  - Outlets as required to discharge water ingress. Provide 1 No. for every 50 linear metre run of channel, or 2 No. minimum. Guide only. Engineer to advise.
  - Cleaning ports / Jetting eyes as required for maintenance. Provide at changes in direction, and at 12 metre maximum intervals between.
- Ideally, RIW Aqua Channel should be placed in a continuous rebate in the floor slab.
  - Recommended size = 130 x 130mm.
  - RIW Aqua Channel can then be bedded in 20mm minimum single sized aggregate, to secure it and promote drainage.
- If insulation boards are used below the floor membrane, then they must be suitable for a wet environment.
- RIW Brick Plugs fix the RIW Cavity Drain to the wall, and allow for fixing of following items.



**RIW LTD**

580 / 581 Ipswich Road, Slough, Berkshire, SL1 4EQ, UK  
 T: +44 (0) 1753 944200 E: technical@riw.co.uk W: www.riw.co.uk

LAC® is a registered trademark of RIW Ltd. Flexiseal Pro, FWM, Heviseal, Toughseal, DPM Red, DPM Blue, Sheetseal 226, Structureseal, Cavitydrain R20, Cavitydrain R7, Gas Seal Black, Gas Seal HC, Sheetseal GR, Structureseal GPT, Sheetseal 9000, Cementjoint, Cementfill FC, Cementfill HB, Cementflex and Cementseal are all trademarks of RIW Ltd. Krystol Internal Membrane™ (Kim®), Krystol Waterstop Treatment™, Kyronite™ Swelling Waterstop and Krystol Waterstop Grout™, trademarks are the property of Kryton Inc.

This drawing is Copyright 2019 of RIW Ltd. Permission for copying is granted only to employees, authorised representatives, customers, and specifiers to support the sale or use of RIW Ltd products. All other rights are reserved.

Project:

Client:

Title:

**RIW CAVITY DRAIN: SEALED SYSTEM**  
**RIW AQUA CHANNEL ABOVE SLAB AT BOTTOM OF RETAINING WALL**

Additional Info:

|              |             |        |          |
|--------------|-------------|--------|----------|
| Date:        | Scale @ A4: | Drawn: | Checked: |
| 19/09/19     | NTS         | RA     | DK       |
| Project Ref: | Drawing No: | Rev:   |          |
|              | RIW/TD/402  |        |          |