

General Notes & Guidance:

This drawing must be read in conjunction with the latest RIW Product Literature.

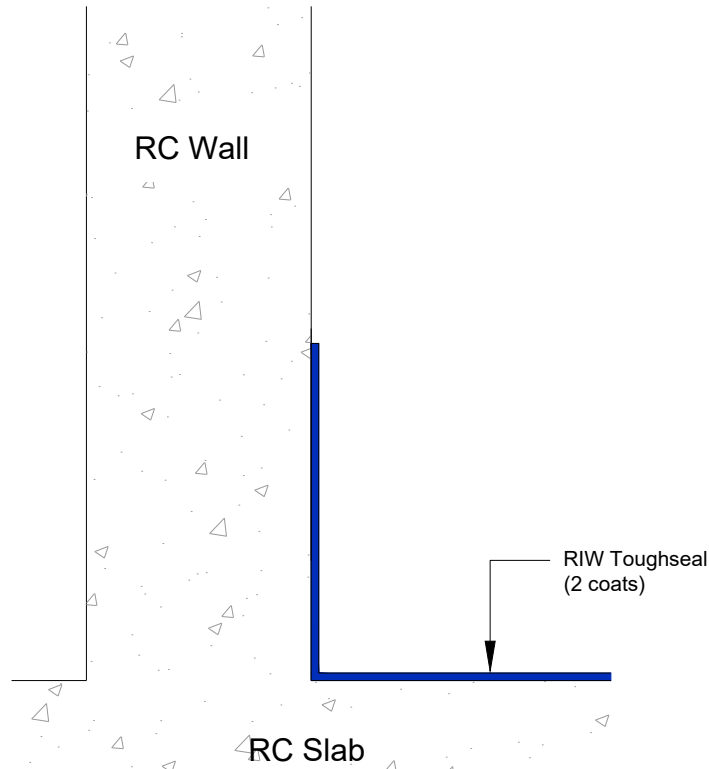
All waterproofing details shown herein must receive approval from the design team or appointed designer before implementation on site, these waterproofing details may have other impacts on the structure and these impacts must be assessed and understood by the design team or appointed designer.

BS8102:2009

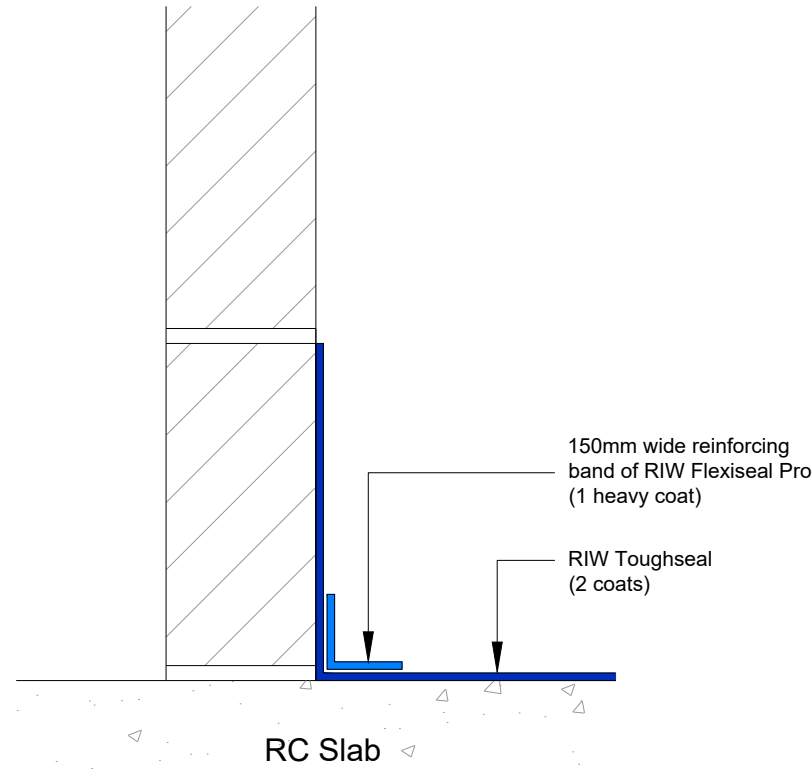
6.2.4 The need for continuity in the waterproofing protection should also be considered when selecting a type of protection. In most circumstances, the protection should be continuous.

Drawing Notes:

1. Surfaces to be coated should be smooth. Use RIW Cementfill products to prepare the surface if necessary.



Concrete Wall
SECTION



Masonry Wall
SECTION



RIW LTD

580 / 581 Ipswich Road, Slough, Berkshire, SL1 4EQ, UK
T: +44 (0) 1753 944200 E: technical@riw.co.uk W: www.riw.co.uk

LAC® is a registered trademark of RIW Ltd. Flexiseal Pro, FWM, Heviseal, Toughseal, DPM Red, DPM Blue, Sheetseal 226, Structureseal, Cavitydrain R20, Cavitydrain R7, Gas Seal Black, Gas Seal HC, Sheetseal GR, Structureseal GPT, Sheetseal 9000, Cementjoint, Cementfill FC, Cementfill HB, Cementflex and Cementseal are all trademarks of RIW Ltd. Krystol Internal Membrane™ (Kim®), Krystol Waterstop Treatment™, Kyrtonite™ Swelling Waterstop and Krystol Waterstop Grout™, trademarks are the property of Kryton Inc.

This drawing is Copyright 2019 of RIW Ltd. Permission for copying is granted only to employees, authorised representatives, customers, and specifiers to support the sale or use of RIW Ltd products. All other rights are reserved.

Project:

Client:

Title:

**PLANT ROOMS, BUNDED AREAS, AND RAISED ACCESS FLOORS:
WALL TO FLOOR CONNECTION DETAIL - CONTAINMENT**

Additional Info:

Date:

19/09/19

Scale @ A4:

NTS

Drawn:

RA

Checked:

DK

Project Ref:

Drawing No:

RIW/TD/501

Rev: